



Data Sheet  
High Performance Door  
**Rapid Roll® 355**

Sophisticated technology to assure safety.

The combination of leading technology and modern industrial design guarantees a top class RapidRoll door.

All-round safety assured by two patented systems.

Exceptional wind resistance due to a stable curtain tension system and wind tabs in the side frames.



Next generation in High  
Performance Door control systems

INTERIOR ● EXTERIOR ○  
PROCESS ○ SERVICE ○

# High Performance Door RapidRoll® 355



## ADVANTAGES OF ALBANY RAPIDROLL® 355:

- all-round safety control through:
- pre-running safety photocell and door line photocell for touchless protection of people and goods
- minimising damages at collisions through the self repairing knock-out-capability integrated in the bottom profile
- good wind resistance by curtain tensioning and windbreak tabs in the side frames
- alternatively door curtain of clear PVC or of RollTex® Plus

## APPLICATION

- as an interior or exterior door between two factory areas
- within fully automated robot operations
- within automated transport systems

## DESIGN

The side frames of the door are made of extruded anodised aluminium. The self-supporting side frames must be fixed only on the head- and the base plates on each side. To service the door, the front plate of the side frame can easily be opened or refitted. The bottom profile and the top roll are made of aluminium too. As standard the bottom profile has a knock-out capability.

## DOOR CURTAIN

The door curtain is made of clear PVC with blue reinforcement stripes. Optional other colours can be chosen. For applications with high mechanical stress alternatively a curtain of RollTex® Plus is available. As standard the door has a tensioning system for extra strength against wind pressure. The edges of the door curtain are reinforced with special wind tabs which are guided in the side frames.

## KNOCK-OUT CAPABILITY

A self repairing knock out capability is standard.

## DRIVE UNIT

Gear motor. Position can be chosen right- or left-hand.

## CONTROL SYSTEM

Standard ACS 50. Optional innovative frequency converter control system MCC<sup>VectorControl</sup> for smooth, dynamic door operation.

## MANUAL ACTIVATION

In the event of power failure, the door can be opened by releasing the brake manually. Depending on the width/height ratio, the door opens partially supported by the springs of the counter balance.

## SAFETY FEATURES

The door is designed according to the Workplace Directive of the UVV regulations and the harmonized CE Guidelines including the EN 13241-1.

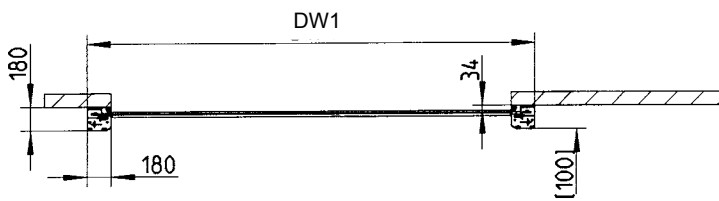
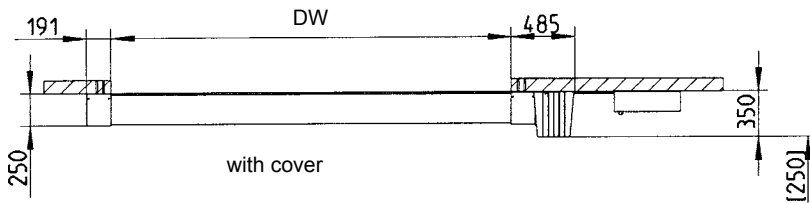
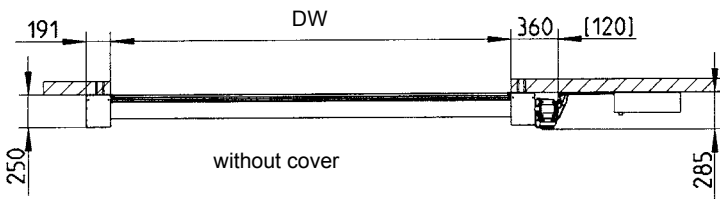
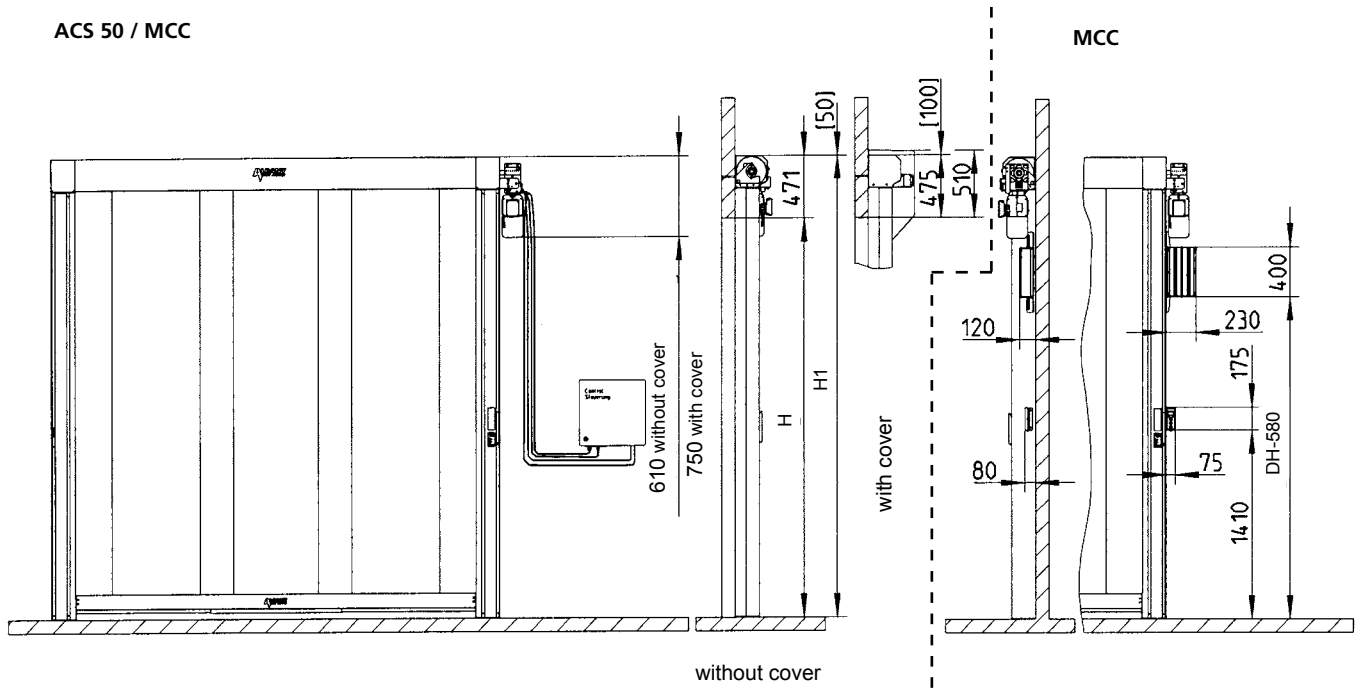
## INDICATION OF RISK

The security of the door is designed for normal use and for vehicles in an industrial environment corresponding to the harmonized CE-Guidelines. In consideration of the on site situation – especially in case of pedestrian use – additional safety measures, such as additional actuators may be required. In addition, special environmental conditions may impact the choice of door type. For more information or to schedule an on-site inspection, please contact an Albany Door Systems sales engineer.

Technical Data		
<b>Interior door</b>	suitable	
<b>Exterior door</b>	suitable	
<b>Wind resistance</b>	class 2 - EN 12424	
<b>Door dimension (mm)</b>	For details please note general drawing!	
DW min. / max.	1000 / 4000 mm	
DH min. / max.	1500 / 4200 mm	
<b>Opening direction</b>	vertical	
<b>Surface</b>		
Side frames	aluminium anodised	
Bottom profile	aluminium anodised	
Top roll	aluminium	
Coloured surface	•	
<b>Covers (option)</b>		
Top roll cover	• <sup>1)</sup>	
Motor cover	• <sup>1)</sup>	
<b>Door curtain (alternatively)</b>		
PVC with blue reinforcement stripes	✓	
PVC with coloured reinforcement stripes	•	
PVC with silicon free reinforcement stripes blue/black	•	
RollTex® Plus *	•	
* optional with windows	•	
<b>Wind tabs</b>	✓	
<b>Curtain tension</b>	✓	
<b>Counterbalance</b>	✓	
<b>Drive unit</b>	electrical	
<b>Chain drive</b>	•	
<b>Control systems</b>		
ACS 50	✓	
MCC <sup>VectorControl</sup>	•	
<b>Safety</b>		
Electrical safety contact edge	•	
Pre-running safety photocell	✓	
Door line photocell	✓	
Fall down protection	✓ tension springs	
Self opening	✓	
Knock-out capability	✓	
Manual activation	✓ with bowden lever operated from the floor	
Second bowden lever	•	
Extended flexible seal	•	
<b>Speed (m/s)</b>	<b>ACS 50</b>	<b>MCC<sup>VectorControl</sup></b>
Open/close up to max. / m/s	1,0/1,0	2,7/1,3
Fuse protection	6,3 A	12 A
Control voltage	24 V DC	24 V DC
Protection	IP 55	IP 55
Motor power / kW	1,1 kW	1,1 kW
3L(N)/PE 220/230/380/400/415V; 50 Hz	✓ <sup>2)</sup>	
3L(N)/PE 380/400/415/440/480V; 50/60 Hz		✓ <sup>3)</sup>
Additional opening heights	–	•
Potential free contacts max. 250 V	✓	•
<b>Traffic light function</b>		
Without direction detection	✓	✓ 24 V DC
With direction detection	–	✓ 24 V DC
Flashing alarm light	✓	✓ 24 V DC
Error message	✓ LED's	✓ plain text
•Option ✓Standard – not available		
<sup>1)</sup> For doors of height ≤ 2500 mm the use of top roll and motor cover is required according to standard EN 13241-1.		
<sup>2)</sup> Transformer necessary for 440/480/500 V.		
<sup>3)</sup> Transformer necessary for 220/230/500 V.		

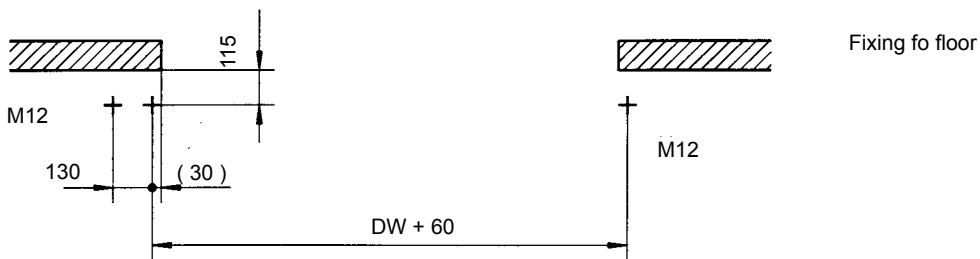
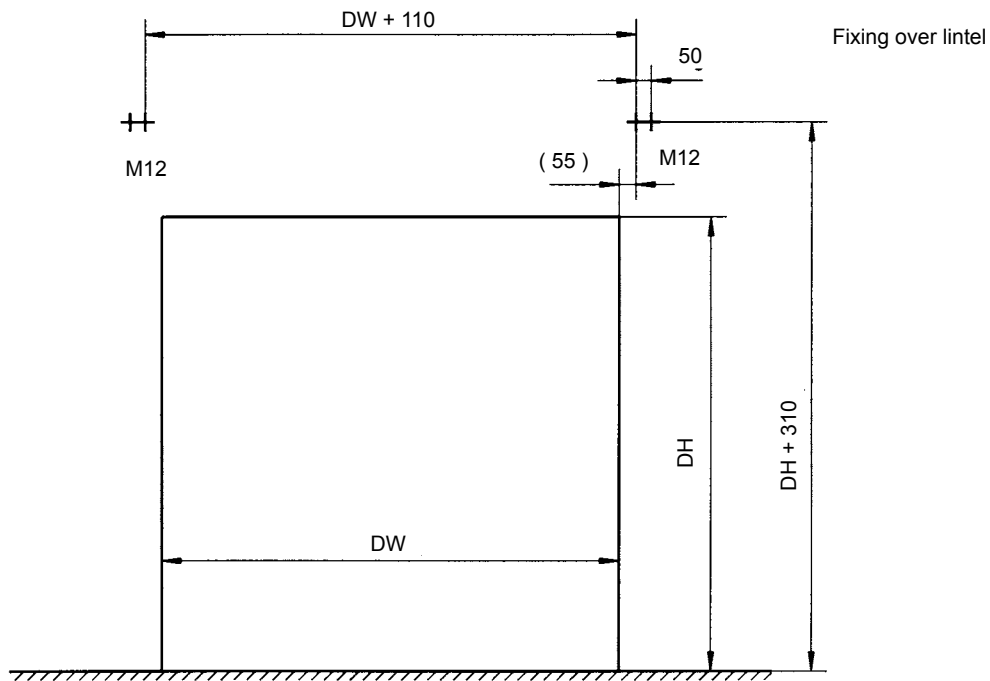
ACS 50 / MCC

MCC



[ ] = Space needed for installation

Important for crash mechanism: The clear opening between the side columns has to be less or exactly the same as the door width.



## TOP ROLL COVER<sup>1)</sup>

Standard: delivered without top roll cover.

Option: top roll cover made of anodised aluminium.

## MOTOR COVER<sup>1)</sup>

Standard: delivered without motor cover.

Option: motor cover in plastic.

## MOTOR POSITION

Available left or right hand side.

## CHAIN DRIVE

An option chain drive can be used when space is at a premium at the sides. It is fitted in front of the side frames.

## CONTROL BOX

Depending on requirements for opening/closing speed and actuators, two different control systems can be chosen: Contactor control system ACS 50 or innovative frequency converter control system MCC<sup>VectorControl</sup>.



## DOOR CURTAIN

Standard: clear PVC with blue reinforcement stripes.

Option: RollTex curtain with/without windows or PVC with coloured reinforcement stripes.

## SIDE FRAME

Side frames from anodised aluminium.

## KNOCK-OUT CAPABILITY

A self repairing knock-out capability is standard. After a crash the door stops and.

## SAFETY FEATURES

The door is equipped with a pre-running safety photocell and a door line photocell.

Option: an electrical safety contact edge can be chosen.

## BOTTOM PROFILE

Bottom profile from aluminium. In case of an uneven floor, an extended flexible seal is available as option.

## ACTUATORS

Individual applications can include additional safety devices. Actuators such as infrared, radar detectors, push buttons, vehicle detector loops or radio transmitters can be added to the control system. Please contact us for additional information for your specific needs.

## Notes:

<sup>1)</sup> For doors of height ≤ 2500 mm the use of top roll and motor cover is required according to standard EN 13241.



Products shown may include additional options.

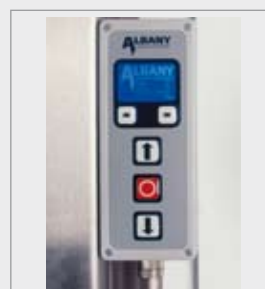
## Frequency converter control system MCC<sup>VectorControl</sup>



Compact dimensions and integrated door design. Easy wiring by pluggable connections.



Compact frequency converter control system with vector control technology for smooth operation of the door.



Display unit in a small box placed at the side frame.



Display unit with foil keys and a graphical display offering easy operation and maintenance.



Products shown may include additional options.



**ALBANY DOOR SYSTEMS**

**ASIA**

KIARA PARK 172-3-2 • JLN. BURHANUDDIN HELMI  
TTDI, 60.000 KUALA LUMPUR  
PHONE: +60 (0) 3 77 27 01 84 • FAX: +60 (0) 3 77 27 01 84  
INFO.ADS.MY@ALBINT.COM

**AUSTRALIA**

23 FAUNCE ST. WEST GOSFORD • 2250 NSW  
PHONE: +61 (0) 2 / 43 23 23 86 • FAX: +61 (0) 2 / 43 24 54 11  
SALES.ADS.AU@ALBINT.COM

**GERMANY**

AM MONDSCHEN 25 • 59557 LIPPSTADT  
PHONE: +49 (0) 29 41 / 766-0 • FAX +49 (0) 2941 / 766-294  
VERKAUF.ADS.DE@ALBINT.COM

**SWEDEN**

BOX 509 • S - 301 80 HALMSTAD  
PHONE: +46 (0) 35/14 73 00 FAX: +46 (0) 35/14 73 99  
SALES.ADS.SE@ALBINT.COM

**USA**

975-A OLD NORCROSS ROAD • LAWRENCEVILLE • GA 30045-4321  
PHONE: +1 (0) 7 770 / 338 / 5000 • FAX: +1 (0) 770/338/5024  
SALES.ADS.US@ALBINT.COM

Albany Door Systems products and services are available around the world. For a subsidiary or representative in your region visit

[WWW.ALBANYDOORS.COM](http://WWW.ALBANYDOORS.COM)